

April 28, 2022

Dear Property Owner,

Enclosed you will find a copy of the City sidewalk trip hazard ordinance. This ordinance follows ADA trip hazard guidelines that require sidewalks to have no abrupt changes in height greater than ¼ inch. To be compliant with federal law and increase safety and reduce liability for our residents, the City of DeWitt has implemented an ongoing Sidewalk Maintenance Program to eliminate trip hazards throughout the city. You have received this letter because your property lies within the area that will be surveyed.

To help keep costs in check, Precision Concrete Cutting has been retained to identify and remove hazards where panels have shifted but the concrete remains solid. By utilizing their sawing process to do repairs (rather than demo and replace) the cost savings are significant. More info about their work can be found at www.safesidewalks.com

Precision Concrete Cutting will begin surveying and repairing trip hazards after July 15th 2022. The City of DeWitt will be making the initial payment to Precision for these repairs. After all repairs have been completed, The City of DeWitt will invoice the property owner for the repair cost. Property owners will have up to one year to make payment to the City for repairs under a total of \$500. For repairs over \$500, homeowners will have up to 4 years to complete payment. Last year the average cost per single repair was \$80. After being surveyed you may notice some blue markings on your sidewalk, these markings indicate that either a repair or replacement is in need. Repairs will be marked with a number, Replacements will be marked with a number and an "X ". Repairs will be made by Precision shortly after the survey. Sidewalk sections that are beyond repair and require replacement will be the responsibility of the property owner and required to be complete by July 15, 2023. Homeowners wishing to make sidewalk repairs on their own should follow the City standard and make repairs by July 15, 2022, before the survey takes place. We will not be making sidewalk condition inspections before July 15th. If you believe your sidewalk may require a repair according to the standard and you have attempted that repair, please keep an eye out for the survey crew as they check your work after July 15th. It is recommended to replace panels that require repair or hire a reputable contractor to make repairs to the listed standard.

Please remember that sidewalk replacement requires an inspection before pouring and that any repairs that are made that still do not comply with the ordinance will be repaired by Precision at the homeowners cost. For this reason the City is encouraging those affected to allow Precision to do the repairs to avoid making these repairs twice.

Thank you for your cooperation and understanding as we work towards gaining compliance with the standard, and create safer sidewalks for everyone to use. If you have questions contact City Hall at 563-659-3811.

For more info see back of page or scan QR code below

↓ Over

136.02 DEFINITIONS. For use in this chapter the following terms are defined:

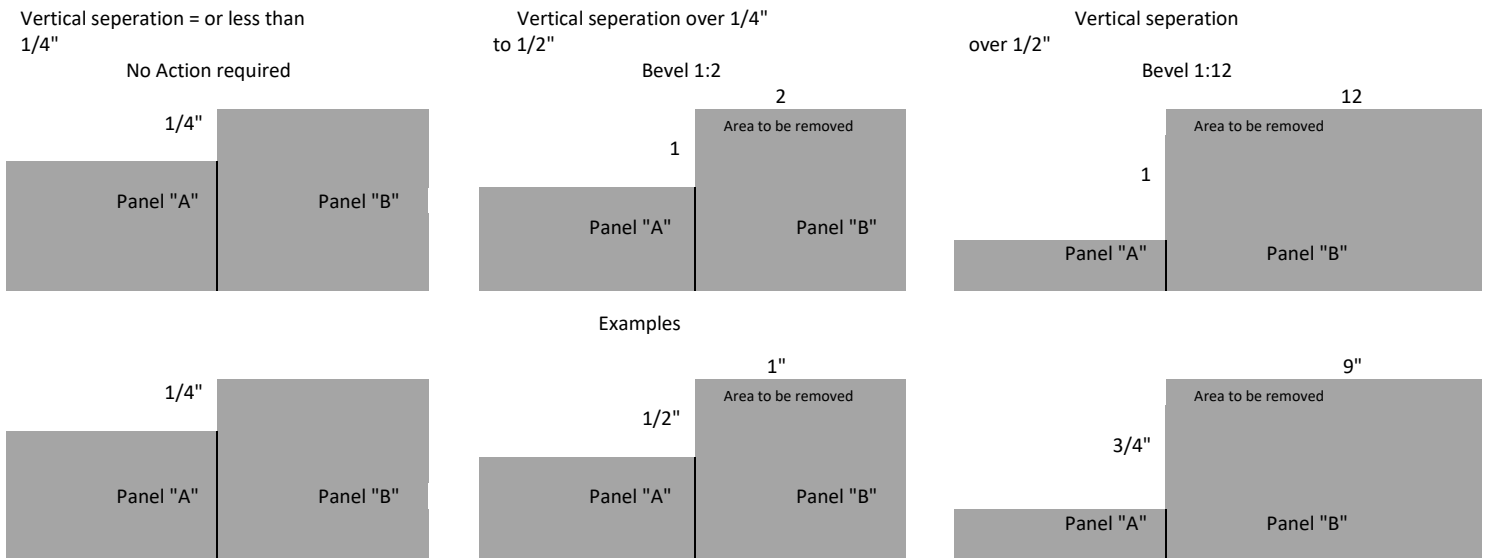
1. "Broom Finish" means a sidewalk finish that is made by sweeping the sidewalk when it is hardening to create a skid resistant surface.
2. "Concrete" means Portland cement with a minimum 4,000 PSI.
3. "Defective Sidewalk" means any public sidewalk exhibiting one or more of the following characteristics:
 - A. Vertical separations equal to one-fourths (1/4) inch or more.
 - B. Horizontal separations equal to one-half (1/2) inch or more.
 - C. Holes or depressions equal to three-fourths (3/4) inch or more and at least four (4) inches in diameter.
 - D. Spalling over fifty percent (50%) of a single square of the sidewalk with one or more depressions equal to three-fourths (3/4) inch or more.
 - E. Spalling over less than fifty percent (50%) of a single square of the sidewalk with one or more depressions equal to three-fourths (3/4) inch or more.
 - F. Any scored section or square of sidewalk that is more than 50% broken into pieces that are less than one square foot.

CHAPTER 136

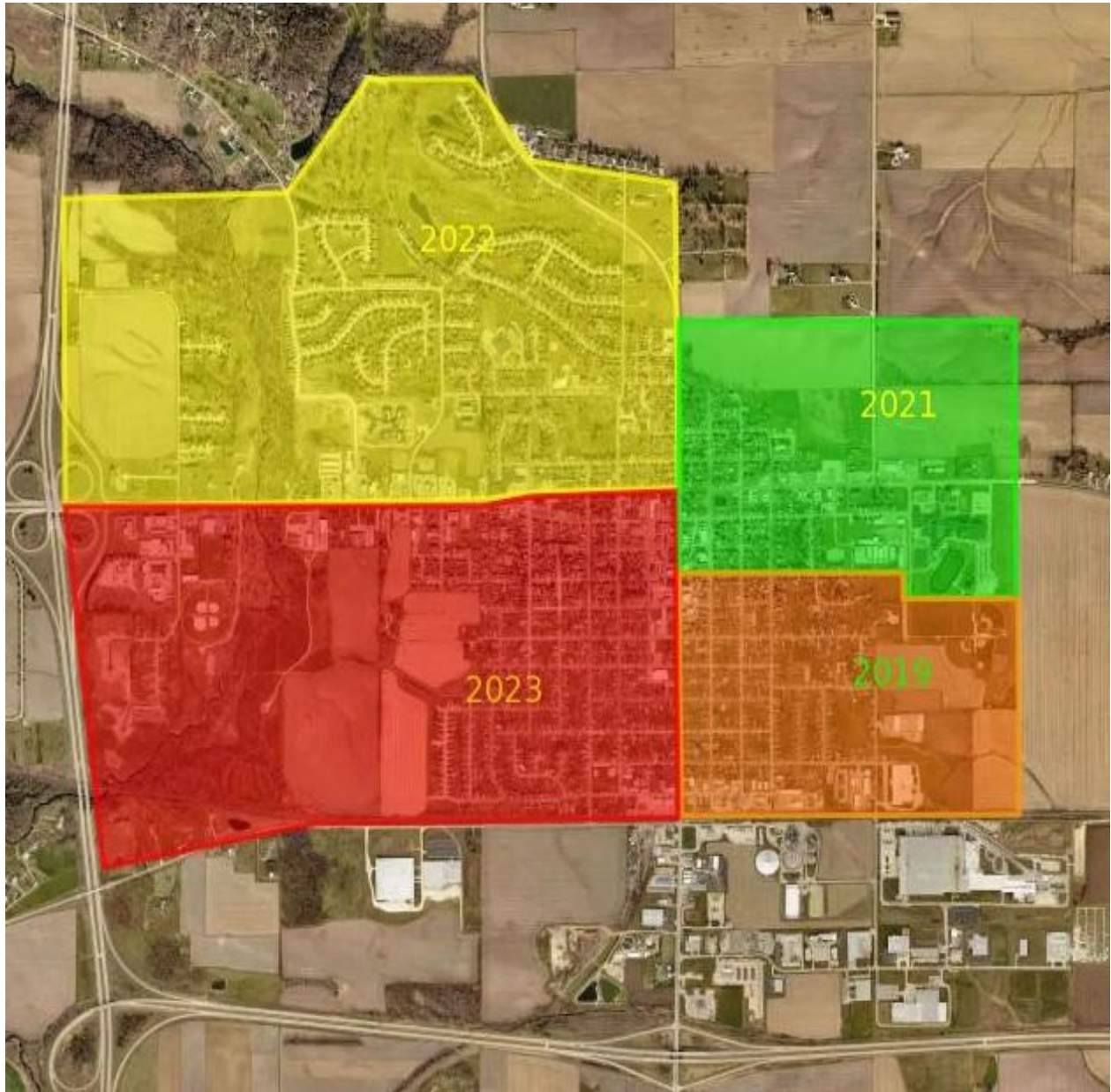
SIDEWALK REGULATIONS

- G. A sidewalk with any part thereof missing to the full depth.
- H. A change from the design or construction grade equal to or greater than three-fourths (3/4) inch per foot.
- I. Changes in level
 1. Vertical. Changes in level of one-fourths (1/4) inch high maximum shall be permitted to be vertical.
 2. Beveled. Changes in level between one-fourths (1/4) inch high minimum and one-half (1/2) maximum shall be a beveled slope on steeper than 1:2.
 3. Ramps. Changes in level greater than one-half (1/2) inch high shall be ramped and shall have a running slope not steeper than 1:12.
 4. Slope. Ramp runs shall have a running slope not steeper than 1:12.

(Ord No. 2021-06 – April 2021 Supp.)



Area to be surveyed



How to measure sidewalk violations



$\frac{3}{4}$ " Violation



$\frac{5}{16}$ " Violation

Before and After



